

FAZUA RIDE 60 *QUICK-START-GUIDE*

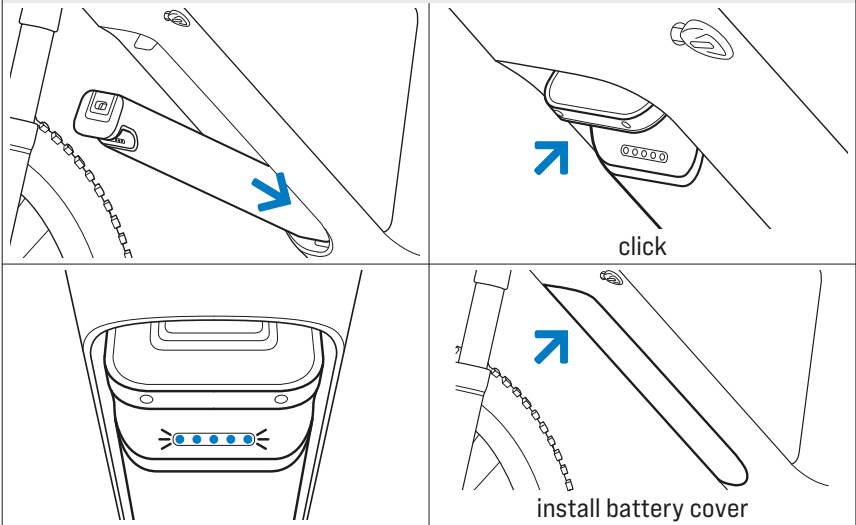


FAZUA

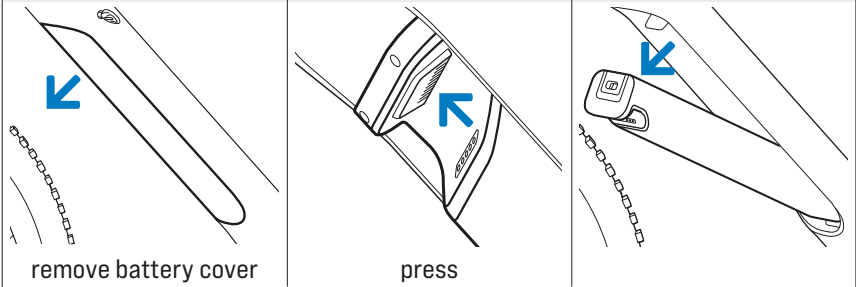


OPERATION MANUAL

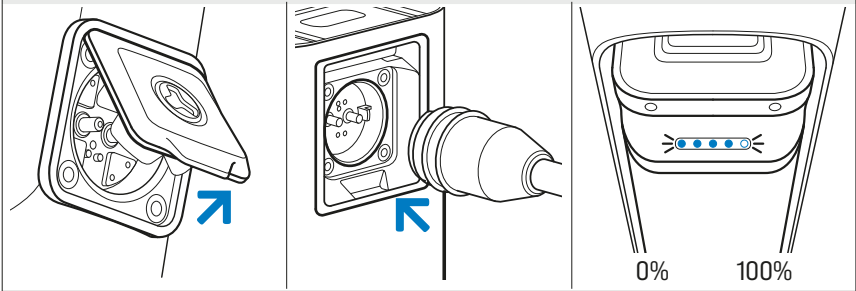
INSTALL BATTERY



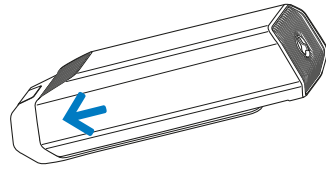
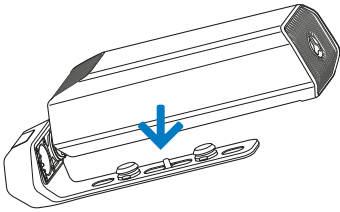
REMOVE BATTERY



CHARGE BATTERY

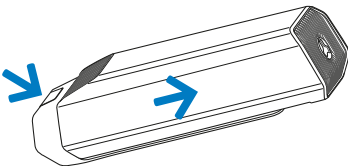


INSTALL ADDITIONAL BATTERY (RANGE EXTENDER)

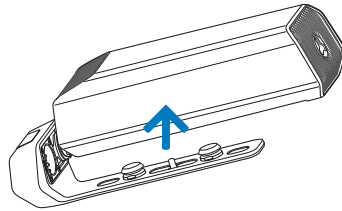


click

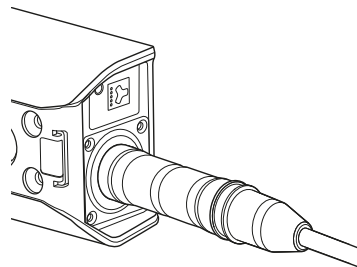
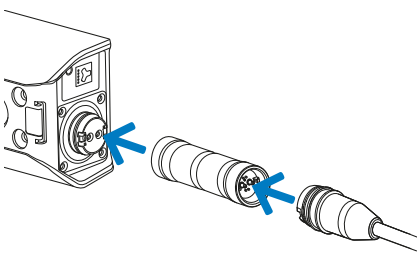
REMOVE ADDITIONAL BATTERY (RANGE EXTENDER)



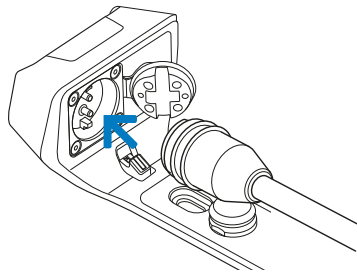
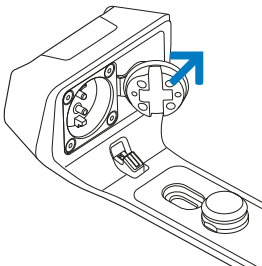
keep pressed & push

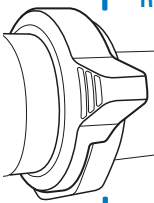
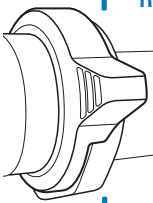
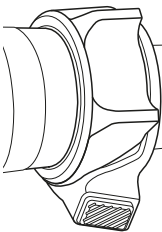
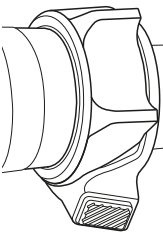
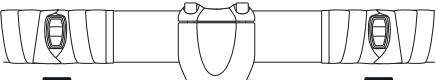


CHARGE ADDITIONAL BATTERY (RANGE EXTENDER)



CHARGE BATTERY (WITH RANGE EXTENDER)



OPERATE SYSTEM	
NOTE: ➔ short press ➡ press & hold	
Control Hub / Ring Control (Urban)	Control Hub / Ring Control (MTB)
 <p>E-BIKE ON / BOOST ➔ RIDING MODE + ➔ LIGHTS on/off ➡ WALK assist ➡ RIDING MODE - ➡ BIKE OFF</p>	 <p>E-BIKE ON / LIGHTS on/off ➔ RIDING MODE + ➔ BOOST ➡ WALK assist ➡ RIDING MODE - ➡ BIKE OFF</p>
Mode Control (Urban)	Mode Control (MTB)
 <p>E-BIKE ON / BOOST ➔ RIDING MODE + ➡ RIDING MODE - ➡ BIKE OFF ➡ WALK assist ➔ LIGHTS on/off</p>	 <p>E-BIKE ON / LIGHTS on/off ➔ RIDING MODE + ➡ RIDING MODE - ➡ BIKE OFF ➡ WALK assist ➔ BOOST</p>
Road Control	
 <p>WALK assist ➡ >5 s + hold. >5 Sek. ➡ E-BIKE OFF RIDING MODE - ➡ <5 s. E-BIKE ON / RIDING MODE + ➡ <1 s. ➡ LIGHTS on/off >2 s. ➡ ➡ BOOST <1 s. ➡</p>	

ASSISTANCE LEVELS

No support (white)

The LED display [B.2] lights up white.

→ Riding without electric pedal assist (like a conventional bicycle).

Assistance level "Breeze"

The LED display [B.2] lights up green.

→ Riding with low but effective support for a maximum range.

Assistance level "River"

The LED display [B.2] lights up blue.

→ Riding with reliable assistance for most applications.

Assistance level "Rocket"

The LED display [B.2] lights up pink.

→ Riding with maximum assistance for challenging rides.



Walk Assist can only be used if no support has been set (support level "no support"/ white).



You can check and individually adjust the maximum motor power using the FAZUA Toolbox or the FAZUA app.

You can also assign other colours for the three support levels there.

SOFTWARE VERSION REQUIREMENT



Always use the latest version of the FAZUA Toolbox and the FAZUA App if you want to make any changes.

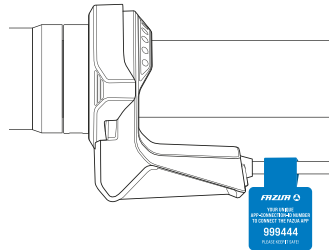
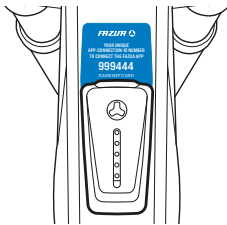
RESTRICTIONS ON CONTROL LAYOUT ADJUSTMENTS



You can only change the Control Layout (**Urban / MTB**) by using the **FAZUA Toolbox Basic** on your own computer; this function does not work in the FAZUA App.

Changing the Control Layout is possible for:
Control Hub, Ring Control and Mode Control.

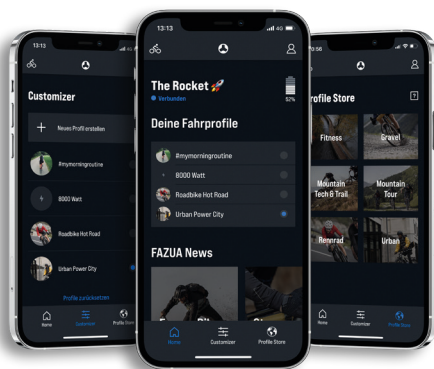
CONNECTION-ID NUMBER



This unique CONNECTION-ID is needed to connect your FAZUA Bike with the FAZUA App.
Please keep it safe!



TO UNLOCK THE FULL POTENTIAL OF YOUR FAZUA BIKE,
DOWNLOAD THE [FAZUA APP](#)



PORSCHE

E-BIKE PERFORMANCE

Marie-Curie-Straße 6
85521 Ottobrunn, Germany
www.fazua.com

FAZUA