



Take a spin.

En





THE INVISIBLE REVOLUTION

evation



05



FAZUA TAKE A SPIN

06

Fazua is changing
eBiking as you know it.





Founders
and managing
directors Johannes
Biechele and
Fabian Reuter.

Currently, there are very few markets that are developing as fast as the eBike market. One of the reasons for this is the Munich-based company Fazua.

With the innovative evation drive system, the team, led by CEO Johannes Biechele and CFO Fabian Reuter, has developed an electric drive system that conveys the natural driving feel of a non-motorized bicycle in an easy, compact, and elegant way. The icing on the cake: Everything is made in Ottobrunn near Munich, Germany.

Thus, the concept of Fazua is the exact opposite of what has been on the market so far.

The arms race between the manufacturers is over and the clear trend now is integrable eBike drive systems, which finally convert eBikes into aesthetic pieces of sports equipment.

Renowned manufacturers already offer premium bikes with the Fazua drive system. Whether road, gravel, MTB or urban bikes, they all rely on the high quality that one may expect from a “Made in Germany” product.

The Evation Drive System

Uniquely light, slim, and sensitive: With a total weight of 4.6 kilograms, the Fazua evation drive system is probably the most discreet mid-engine eBike system on the market.

GOOD TO KNOW

1. The more power you put on the pedals, the more the system supports you.

2. The drive system supports you most efficiently at a cadence between 65 and 85 RPM. This is where you get the optimal support.

Bottom bracket, drivepack, and replaceable battery are so unobtrusively integrated into the bike that they are made for the demands of sporty bike and eBike fans who want to ride with gentle and optional support.

The low weight of the drive system is positioned centrally above the bottom bracket of the bike. This creates a natural riding experience, which you otherwise only get from non-motorized bicycles. The drivepack can be easily removed from the down tube and clicked in again with just one single move.

In a matter of seconds, you can transform your pedelec into a bicycle. It does not matter if you drive with or without assistance, you will never feel any resistance from the engine you have to fight against – just like on a normal bike.



No matter if
you are off-road
or in the city
- the evation
drive system
always supports
you optimally.

FAZUA TAKE A SPIN



13

MEET EVATION:

The lightest and most
compact drive system
in its field.



FAZUA TAKE A SPIN

Perfect for sporty ambitious riders.



At speeds above 25 km/h a freewheel decouples the engine completely from the bottom bracket gearbox.

This allows you to pedal without support at these speeds and at the same time without any resistance. Thus, you are only supported, if you are just starting up, having to deal with headwind, or if it goes steeply uphill.

This makes it particularly interesting for ambitious athletes who can easily ride over 25 km/h on flat ground, but

need support as soon as it gets steep or the wind is blowing exhaustingly.

You can choose between three support levels: BreezeMode for restrained support, such as through a gentle tailwind. The moderate RiverMode and RocketMode when the mountain gets steeper.

In addition, there is a neutral mode in which the system is completely decoupled and you ride along just like on a normal bike.



Drivepack

Removable motor and battery unit with a total weight of just 3.3 kg.



Bottom Bracket

A two-sided torque measurement and additional cadence measurement ensure the optimal support of the system, which is efficiently transmitted to the crank via an angular gearbox.



The maximum range varies with the speed you travel with. If you ride faster than 25 km/h, the system consumes no energy. But if you ride with exactly 25 km/h and the highest level of support you will have a reach of 65 km (40.4 miles) on flat ground.

Altimeter/Charge

Mountain Bike

750_{hm}

Road Bike

1300_{hm}

Type

MID-ENGINE

Total
Weight

4.6_{Kg}

Support
Levels

3

Maximum
Torque

60_{Nm}

Battery
Capacity

250_{Wh}

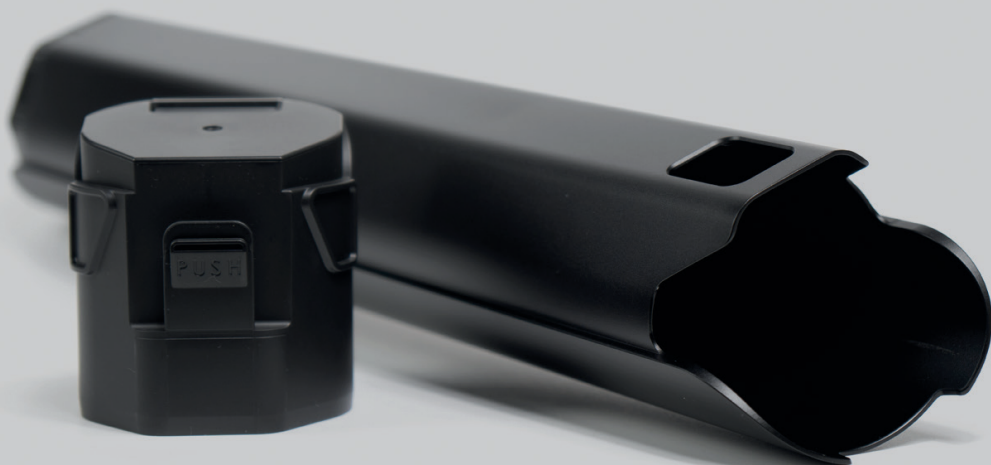
The Downtube Cover

- Weight: 400 g
- Exchange motor and battery unit with downtube cover within seconds.
- Fits any Fazua-powered bike.



The 400 g light aluminium cover is hollow and fits exactly into the down tubes of all bikes equipped with the sporty evation drive. The hollow space can then be used as practical storage for repair kits, tools or food.

By exchanging the motor unit and battery with the cover, the bike weight is decreased by 2.9 kg.



Our Service Concept

We want you to be happy with your Fazua drive system. That's why eBike service with Fazua is comfortable, uncomplicated, and personal.

With the intuitive evation service toolbox you can even realize firmware updates and continuously optimize the performance of your drive system. The diagnostic function also allows you to check the condition of the system. You can also leave the service to a real expert. Your certified Fazua service partner is a bicycle dealer specially

trained in our drive system and the associated service toolbox and is always close to you. Our service and dealer network throughout Europe is growing rapidly!

For questions and concerns you can reach us quickly and at any time via service@fazua.com



Expertise through training. Your Fazua service partner knows exactly how he can help you.



Fazua offers
you an extensive
network of Fazua
service partners
throughout
Europe.

20

TAKE A SPIN





FAZUA TAKE A SPIN

Fazua GmbH
Marie-Curie-Str. 6
85521 Ottobrunn
GERMANY

+49 89 171 00 06 80
info@fazua.com
fazua.com

—Design
Paleworks
paleworks.com

—Photography
Stefan Grau
Philipp Wulk
Julia Richter
Henrik Hecht

Subject to change.
Made in Germany.



fazua.com

